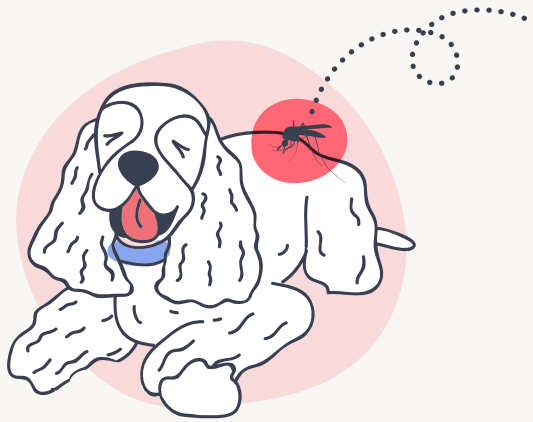


# Heartworm Disease in Dogs



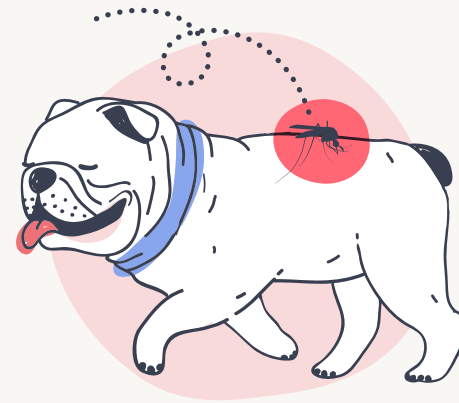
## How do dogs get heartworms?



A mosquito bites an animal infected with heartworm, ingesting baby worm larvae.



Over the course of 10 to 14 days, these larvae mature to the “infective stage.”



The same mosquito bites another dog, transmitting the infective larvae.






The larvae continue to grow, eventually reaching the heart, arteries, and lungs.

## Know the symptoms

- Exercise Intolerance
- Persistent Cough
- Difficulty Breathing
- Appetite and/or Weight Loss
- Lethargy
- Swelling of the Belly

## Preventive care is crucial

-  Annual Wellness Exams
-  Preventative Medication
-  Routine Heartworm Testing

## All dogs need heartworm protection

Pups everywhere are at risk for heartworm disease. That's why Pumpkin's optional Preventive Essentials Pack for dogs 6 months and older **fully refunds** a yearly heartworm test!

[Learn More at Pumpkin.pet/heartworm](https://pumpkin.pet/heartworm)

**pumpkin**

The best treat is a healthy life.

Limitations apply. For terms and conditions, visit [pumpkin.care](https://pumpkin.care). Pumpkin Insurance Services Inc. (NPN#19084749) (“Pumpkin”) is a licensed insurance agency, not an insurer. Insurance plans underwritten by United States Fire Insurance Company. Preventive Essentials is not an insurance policy, and is not available in all states. Form #100434