

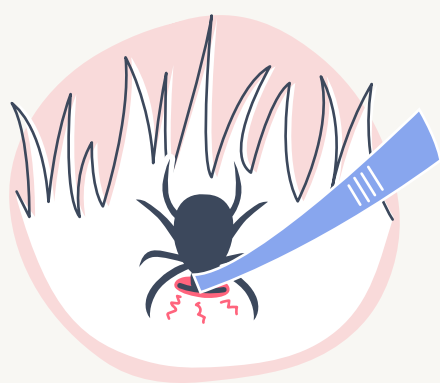
Lyme Disease in Dogs

Yikes! There's a tick on my pooch. How do I remove it?

Your dog is most likely to get Lyme disease from a deer tick that's been feeding for 12 hours, so it's important to act fast and carefully. Follow these four steps:



1. Protect your hands from potential bacteria and bites with disposable gloves, or a clean tissue.



2. Using a good pair of tweezers, get as close to the skin as possible and pinch the tick.



3. Pull the tick straight up and off of your pet. To avoid leaving parts in the skin, do not twist or pull at an angle.



4. Crush the tick, or place it in rubbing alcohol before disposing. Keep your gloves on for this final step!

Know Key Symptoms

Fever
Swollen Joints or Lymph Nodes
Limping or Lameness
Stiffness
Appetite Loss
Lethargy
Depression

Learn About Preventive Care



Routine Tick Checks



Annual Tick & Heartworm Disease Test



Preventative Medication



Lyme Disease Vaccine

All dogs need tick protection.

Pups all across the US are at risk for Lyme disease. That's why Pumpkin's optional preventive care pack for dogs 6 months and older fully refunds a Lyme disease vaccine and tick & heartworm disease test (AKA vector-borne disease test) each year!

Learn More at [Pumpkin.pet/lyme](https://pumpkin.pet/lyme)

pumpkin

The best treat is a healthy life.

Limitations apply. For terms and conditions, visit pumpkin.care. Pumpkin Insurance Services Inc. (NPN#19084749) ("Pumpkin") is a licensed insurance agency, not an insurer. Insurance plans underwritten by United States Fire Insurance Company. Preventive Essentials is not an insurance policy, and is not available in all states. Form #100460